



WORLD'S BEST
ALLOY BULLBARS

East Coast Bullbars (ECB Pty Ltd)

Tel: 07 3897 5700

Fax: 07 3283 1168

ecb@ecb.com.au www.ecb.com.au

29 Snook St
Clontarf QLD 4019
Australia

Po Box 122
Margate QLD 4019
Australia

EAN108SY

REPLACES: 15.01.13
REVISED: 16.01.18

FITTING INSTRUCTIONS

NISSAN PATHFINDER R51 05/10on & NAVARA D40 ST-X 05/10on WINCH COMPATIBLE (UP TO XP 9.5) ARC™ PROTECTION BAR WITH FOG LIGHTS VEHICLE FRONTAL PROTECTION SYSTEM (VFPS) FOR AIR BAG & ADR COMPLIANT VEHICLES

Check installation hardware before commencing.

1. Carefully cut around templates (supplied) for bumper trim using scissors. **See figure 1** for placement. **CAUTION:** Measure template to ensure correct size, some printers may vary.
2. To avoid damage to vehicle when cutting, use masking tape to cover area where template is placed on vehicle. Place template onto vehicle and mark cut line. From lower front of template, continue line around front of vehicle to top corner of centre vent. Line should run 15mm above fog light opening. **Caution:** Ensure markings on template match area on bumper.
3. Remove lower plastic trim from bumper cover. Six 10mm head bolts.
4. Remove inner guard from edge of plastic bumper skin. Two PK screws (two 10mm head bolts on extra cab) from under side of bumper and one pk screw on front edge of wheel arch. **Caution:** Ensure rear of bumper at cut line is free from electrics harnesses and headlight water tubes before cutting. Remove headlight washers from bumper (if fitted) before cutting.
5. Using a jigsaw or similar, cut area previously marked using template.
6. Remove lower half of plastic bumper cover. Four 10mm head bolts on underside of bumper.
7. Disassemble engine shield, remove two 10mm head bolts on front of engine shield; loosen rear 10mm head bolts and slide forward to remove.
8. Remove bumper support, two 17mm head bolts (per side).
9. Remove tow hook from passenger's side of vehicle, two 17mm head bolts.
10. Install ECB steel mounting brackets (supplied) onto vehicle. Four M12 x 40mm bolts, spring washers and flat washers (supplied) (per side). For bolts two under vehicle and two on front of chassis rails. **Finger tighten only. See figures 2 and 3.**
11. Using a jack or suitable lifting equipment, install ECB winch frame (supplied) onto ECB steel mounting brackets with eight ½ x 1 ½ bolts, flat washers, spring washers and nuts (supplied). **See figure 4.** Place bolt heads to winch side of mount for ease of fitment.
12. Align ECB winch frame to sit level to vehicle. **Loosely tighten bolts.**
13. Fit winch to ECB winch frame as per manufacturer's instructions. Fit using front bolts in winch only. Rear bolts are installed later in the fitment. **Note:** Four extra 3/8 flat washers have been included in ECB fitting kit for use on bolts for winch fitment to ECB winch frame where not supplied by winch manufacturer.



**WORLD'S BEST
ALLOY BULLBARS**

East Coast Bullbars (ECB Pty Ltd)

Tel: 07 3897 5700

Fax: 07 3283 1168

ecb@ecb.com.au www.ecb.com.au

29 Snook St
Clontarf QLD 4019
Australia

Po Box 122
Margate QLD 4019
Australia

14. Fit winch fairlead rollers to front of ECB winch frame using two 3/8 x 1 bolts, flat washers, spring washers and nuts (supplied), with head of bolt to inside (winch side) of winch frame. **See figure 5. Finger tighten only.**
15. Fit ECB control box mount (supplied) to drivers side of ECB winch mount using two 3/8 x 1 bolts, flat washers, spring washers and nuts(supplied). **Important:** Place head of bolt to rear (winch side) of ECB winch mount.
16. Align mounts to centre of vehicle.
17. **Tighten all bolts.**
18. Trim sides of engine cover to fit between ECB Steel mounting systems. **See figure 6.** Mark and drill front of engine cover to suit rear winch fitment holes of winch frame. Refit engine cover to underside of winch frame using bolts for rear of winch fitment. **Tighten all bolts.**
19. Install winch wiring as per manufacturer's instructions. Ensure wiring is fitted in such a way to be protected from heat and sharp objects. Mount control box for checking of wiring only, do not tighten in position. **See figure 7.**
20. Disconnect indicator and parking lights on vehicle. Install ECB quick click wiring harnesses (supplied) between disconnected harness and indicator / park lights on vehicle. Run wiring out from under lights ensuring clearance from sharp edges and moving parts.
21. Connect ECB Quick Click fog light wiring harness (supplied) into original wiring harness.
22. Fit ECB LED indicator / park lights (supplied) into protection bar as per instructions supplied with the LED indicator kit. **NOTE: Ensure park light is to outside. See figure 8.**
23. Attach ECB fog lights to protection bar. Place M6 x 20 bolts, spring washers (supplied) through light mount from inside and attach nut to top. Slide assembly into light mount in Protection bar and centralize light to hole. **TIGHTEN FIRM ONLY. See figure 9.**
24. Attach 6mm clip lock trim (supplied) to top of ECB protection bar. **NOTE:** Trim off lower edge on an angle so trim will sit flush with end of protection bar. **See figures 10, 11 and 12.** Attach 6mm length of clip lock trim (supplied) to each side of roller fairlead cut out in skirt.
25. Attach 3mm clip lock (supplied) to underside of bumper trim on sides of vehicle. **NOTE:** Trim edge on an angle so trim will sit flush with both ends of plastic bumper cut area. **See figure 13.**
26. Remove control box from mount and push to centre of vehicle.
27. Fit ECB protection bar to outside of steel mounting brackets. Use 1/2 x 1 1/2 bolts, flat washers, spring washers and nuts (supplied). **Finger tighten only.**
28. Align ECB protection bar with vehicle allowing minimum 12mm between bar wings and bumper cut for body twist. **Tighten all bolts. See figures 14 and 15.**
29. Refit winch control box to ECB control box mount. **Tighten in position.** Ensure wiring is fitted in such a way to be protected from heat and sharp objects. Fit Fog light trims to inspection holes in top of ECB Protection Bar with long side of trim to front of hole. **See figure 16.**
30. Align fairlead rollers approximately 10mm from underside of ECB protection bar. **Tighten in position.**
31. Trim inner guards to suit shape and height of bumper.



**WORLD'S BEST
ALLOY BULLBARS**

East Coast Bullbars (ECB Pty Ltd)

Tel: 07 3897 5700

Fax: 07 3283 1168

ecb@ecb.com.au www.ecb.com.au

29 Snook St
Clontarf QLD 4019
Australia

Po Box 122
Margate QLD 4019
Australia

32. Connect indicator /park lights. Check for correct operation.
33. Connect winch and test for correct operation.

ENSURE NUMBER PLATE IS CLEARLY VISABLE

Note: When fitting/refitting the licence plate to the vehicle, ensure there is no obstruction to licence plate vision in accordance with local authorities. If required relocate licence plate to an alternate location.

Further VFPS Notes:

- a) Do not attach VFPS to the vehicle using anchorages not intended for this purpose (e.g. engine mounting bolts).
- b) Do not use this product for any vehicle make or model, other than those specified by the VFPS manufacturer.
- c) Do not remove the plaque or label from the VFPS.
- d) Do not modify the structure of the VFPS in any way.
- e) No accessory or fitment should project forward of the VFPS forward profile.
- f) **ENSURE THESE INSTRUCTIONS ARE LEFT WITH VEHICLE OWNER AND/OR OPERATOR.**

IMPORTANT INFORMATION

Periodically check bolts and nuts for correct tightness, especially if travelling on rough roads

FITTING KIT

1 – Pair ECB Steel mounting brackets	2 – M6 x 20 bolts
1 – ECB winch mount	2 – M6 Flat washers
1 – ECB winch control box mount	2 – M6 spring washers
14 – ½ x 1 ½ bolts	2 – M6 nuts
28 – ½ flat washers	1 – ECB LED Indicator / Park light kit
14 – ½ spring washers	1 - Quick Click Indi / Park kit (IC05NAVECB100H)
14 – ½ nuts	1 – Pair fog lights
8 – M12 x 1.25 x 40 bolts	1 – Quick Click Fog light kit (IC10D40S1004ECBH)
8 – M12 flat washers	1 – ASL fog light wiring kit
8 – M12 spring washers	4 – Fog light trims
4 – 3/8 x 1 ¼ bolts	1 – 2500mm length 6mm clip lock trim
12 – 3/8 flat washers	2 – 500mm length 3mm clip lock trim
4 – 3/8 spring washers	2 – 220mm length 6mm clip lock trim
4 – 3/8 nuts	



**WORLD'S BEST
ALLOY BULLBARS**

East Coast Bullbars (ECB Pty Ltd)

Tel: 07 3897 5700

Fax: 07 3283 1168

ecb@ecb.com.au www.ecb.com.au

29 Snook St
Clontarf QLD 4019
Australia

Po Box 122
Margate QLD 4019
Australia

Please check to ensure accuracy of scale
80mm

JOIN BUMPER TO GUARD
ALIGN HERE

EDGE OF WHEEL ARCH
ALIGN TEMPLATE HERE

CUT LINE

CUT LINE

CUT LINE

JOIN TEMPLATE HERE JC

JOIN TEMPLATE HERE JC

CUT TEMPLATE;
SLIDE UNDER
EDGE OF
HE



**WORLD'S BEST
ALLOY BULLBARS**

East Coast Bullbars (ECB Pty Ltd)

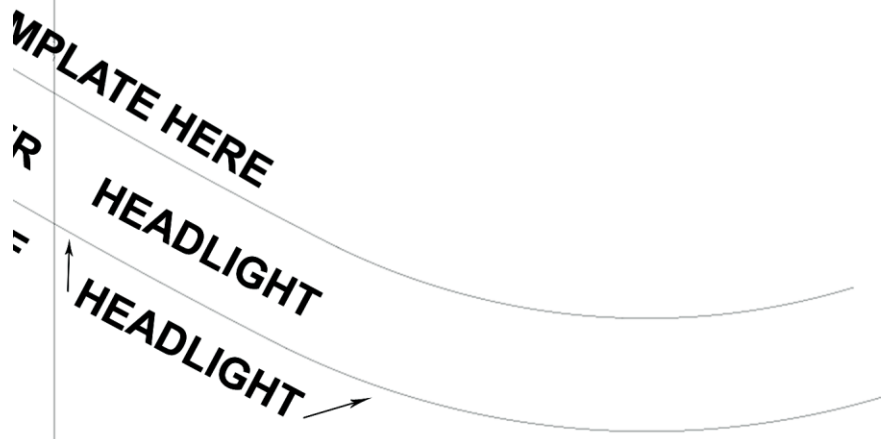
Tel: 07 3897 5700

Fax: 07 3283 1168

ecb@ecb.com.au www.ecb.com.au

29 Snook St
Clontarf QLD 4019
Australia

Po Box 122
Margate QLD 4019
Australia



E JOIN TEMPLATE HERE

E JOIN TEMPLATE HERE

CUT LINE

CUT LINE

Please check to ensure accuracy of scale



CUT LINE

CUT LINE

CUT LINE

(C) Copyright ECB Pty Ltd 2010



**WORLD'S BEST
ALLOY BULLBARS**

East Coast Bullbars (ECB Pty Ltd)

Tel: 07 3897 5700

Fax: 07 3283 1168

ecb@ecb.com.au www.ecb.com.au

29 Snook St
Clontarf QLD 4019
Australia

Po Box 122
Margate QLD 4019
Australia



WORLD'S BEST
ALLOY BULLBARS

East Coast Bullbars (ECB Pty Ltd)

Tel: 07 3897 5700

Fax: 07 3283 1168

ecb@ecb.com.au www.ecb.com.au

29 Snook St
Clontarf QLD 4019
Australia

Po Box 122
Margate QLD 4019
Australia



Figure 1: Align rear of template to plastic bumper / guard join. Mark and cut to shape.

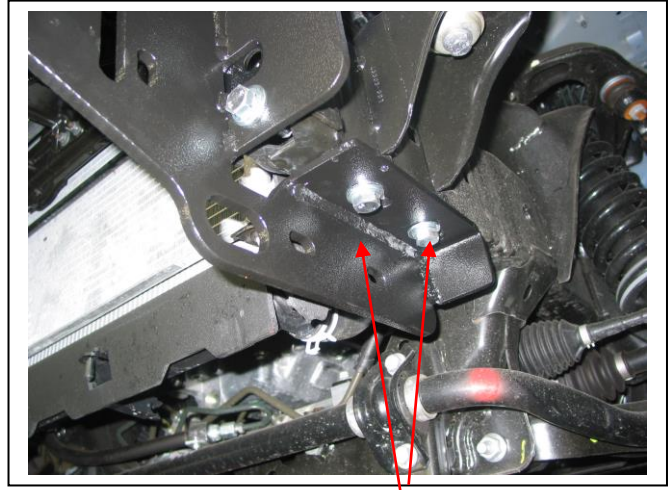


Figure 2: Bolts under vehicle

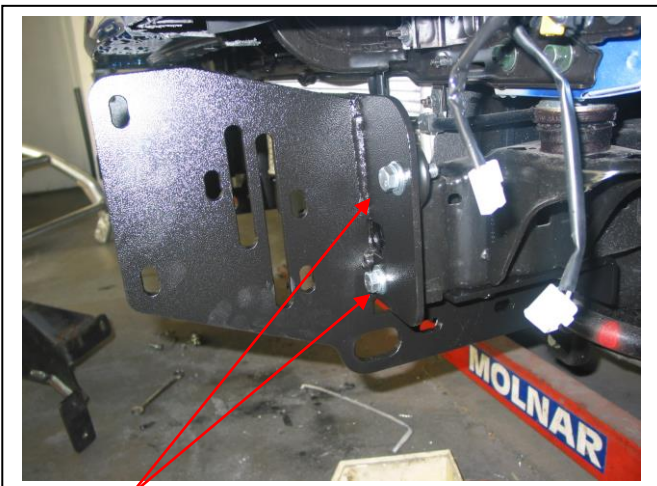


Figure 3 Bolts in front of chassis rail.



Figure 4: Winch frame mounted to inside of mounts



Figure 5: Fairlead rollers being attached to winch frame



Figure 6: Approximate trim on Engine shield.



**WORLD'S BEST
ALLOY BULLBARS**

East Coast Bullbars (ECB Pty Ltd)

Tel: 07 3897 5700

Fax: 07 3283 1168

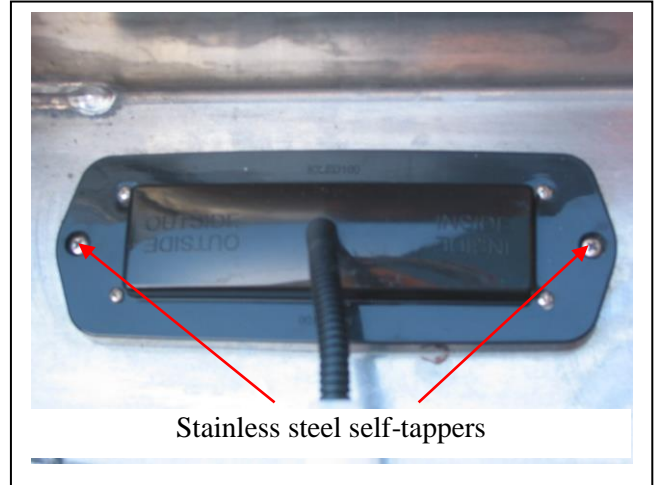
ecb@ecb.com.au www.ecb.com.au

29 Snook St
Clontarf QLD 4019
Australia

Po Box 122
Margate QLD 4019
Australia

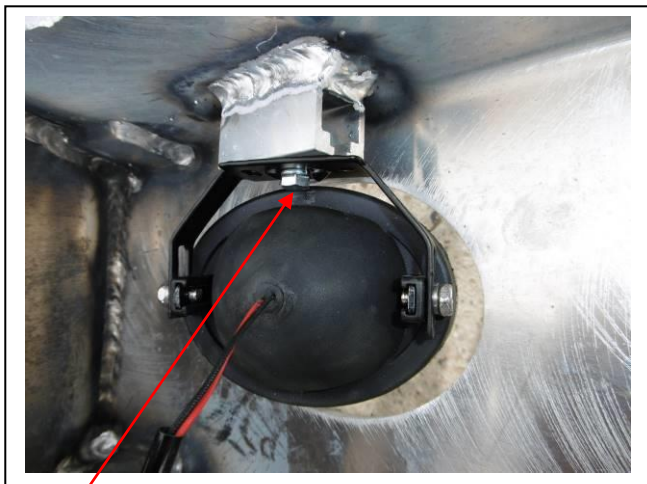


Figure 7: Ensure winch wiring is clear of hot and sharp objects.



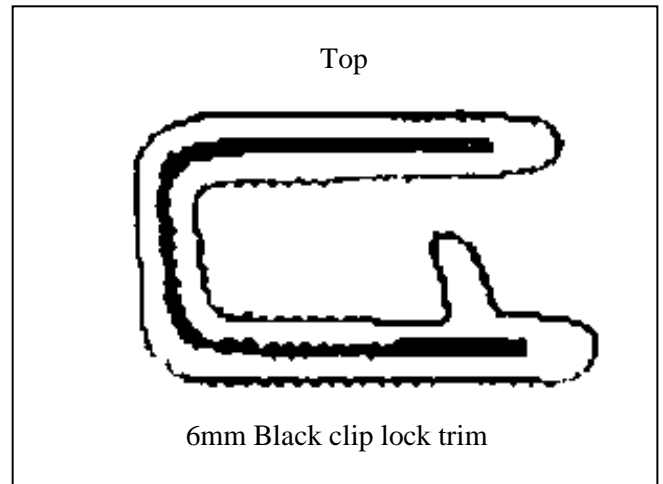
Stainless steel self-tappers

Figure 8:



M6 bolt

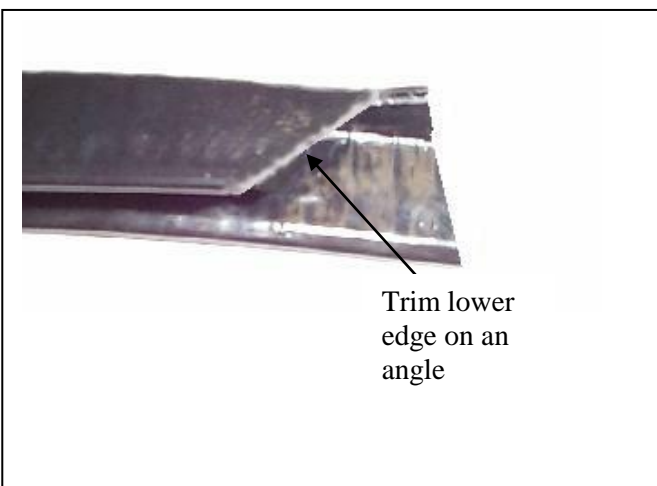
Figure 9:



Top

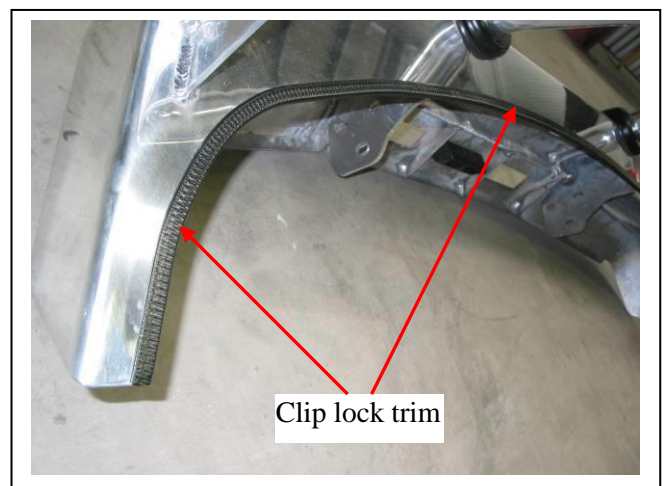
6mm Black clip lock trim

Figure 10



Trim lower edge on an angle

Figure 11



Clip lock trim

Figure 12



**WORLD'S BEST
ALLOY BULLBARS**

East Coast Bullbars (ECB Pty Ltd)

Tel: 07 3897 5700

Fax: 07 3283 1168

ecb@ecb.com.au www.ecb.com.au

29 Snook St
Clontarf QLD 4019
Australia

Po Box 122
Margate QLD 4019
Australia



Figure 13: 3mm clip lock trim on outer cut edge of plastic bumper.



Figure 14: Front view



Figure 15: Side view



Figure 16: Inspection holes in top of Protection Bar



**WORLD'S BEST
ALLOY BULLBARS**

East Coast Bullbars (ECB Pty Ltd)

Tel: 07 3897 5700

Fax: 07 3283 1168

ecb@ecb.com.au www.ecb.com.au

29 Snook St
Clontarf QLD 4019
Australia

Po Box 122
Margate QLD 4019
Australia

We value your comments

Dear Fitter,

ECB would like to know how you went with the installation of this product. We value your comment and may need to contact you to clarify some details so please complete your contact details clearly.

We would appreciate if you could complete as many of the following details as possible.

Your Name:	Your contact No.
Product Part No.	Product Invoice No.
Product Description:	Make, model, and year of vehicle:
Product Work Order No.	Company your from/Company product purchased from:

Date of Fitment: ____/____/____

Was the fitting hardware supplied complete?

Yes

No

If no what was not supplied

Did the installation go well?

Yes

No

Please provide comments

Please draw diagrams if you need to.

Post to
Reply Paid 122
PO Box 122
Margate QLD 4019

Fax to
(07) 3283 1168



WORLD'S BEST
ALLOY BULLBARS

East Coast Bullbars (ECB Pty Ltd)

Tel: 07 3897 5700

Fax: 07 3283 1168

ecb@ecb.com.au www.ecb.com.au

29 Snook St
Clontarf QLD 4019
Australia

Po Box 122
Margate QLD 4019
Australia

DESPATCH CHECKLIST EAN108SY

ICZBKCN108



Work Order #		See other side of this page for photos of all mounts
Finish:		
Transport:		
Due Date:		

- 1– Pair Steel mounting brackets. **Caution: Front mount plates are sided.**
- 1 – Steel winch frame.
- 1 – Steel control box mount.
- 4 – Fog light trims
- 1 – Bolt Kit
- 1 – ECB LED Indicator / Park light kit.
- 1 - Quick Click Indi / Park kit (IC05NAVECB100H)
- 1 – Pair ECB fog lights
- 1 – Quick Click Fog kit (IC10D40S1004ECBH)
- 1 – ASL wiring kit
- 1 – 2400mm length 6mm clip lock trim
- 2 – 500mm lengths 3mm clip lock trim
- 2 – ECB Overrides – **Fitted to Bar**
- 5 – 6mm Air Scoops – **Fitted to Bar**



Is this product “the best it can be” Yes _____/_____
Wrapper’s initials / Checker initials

If **NO** fix before continuing

All parts checked and completed by:

Nut and bolts: _____ Date __/__/__

Order control: _____ Date __/__/__

Final wrap check: _____ Date __/__/__



East Coast Bullbars (ECB Pty Ltd)

Tel: 07 3897 5700

Fax: 07 3283 1168

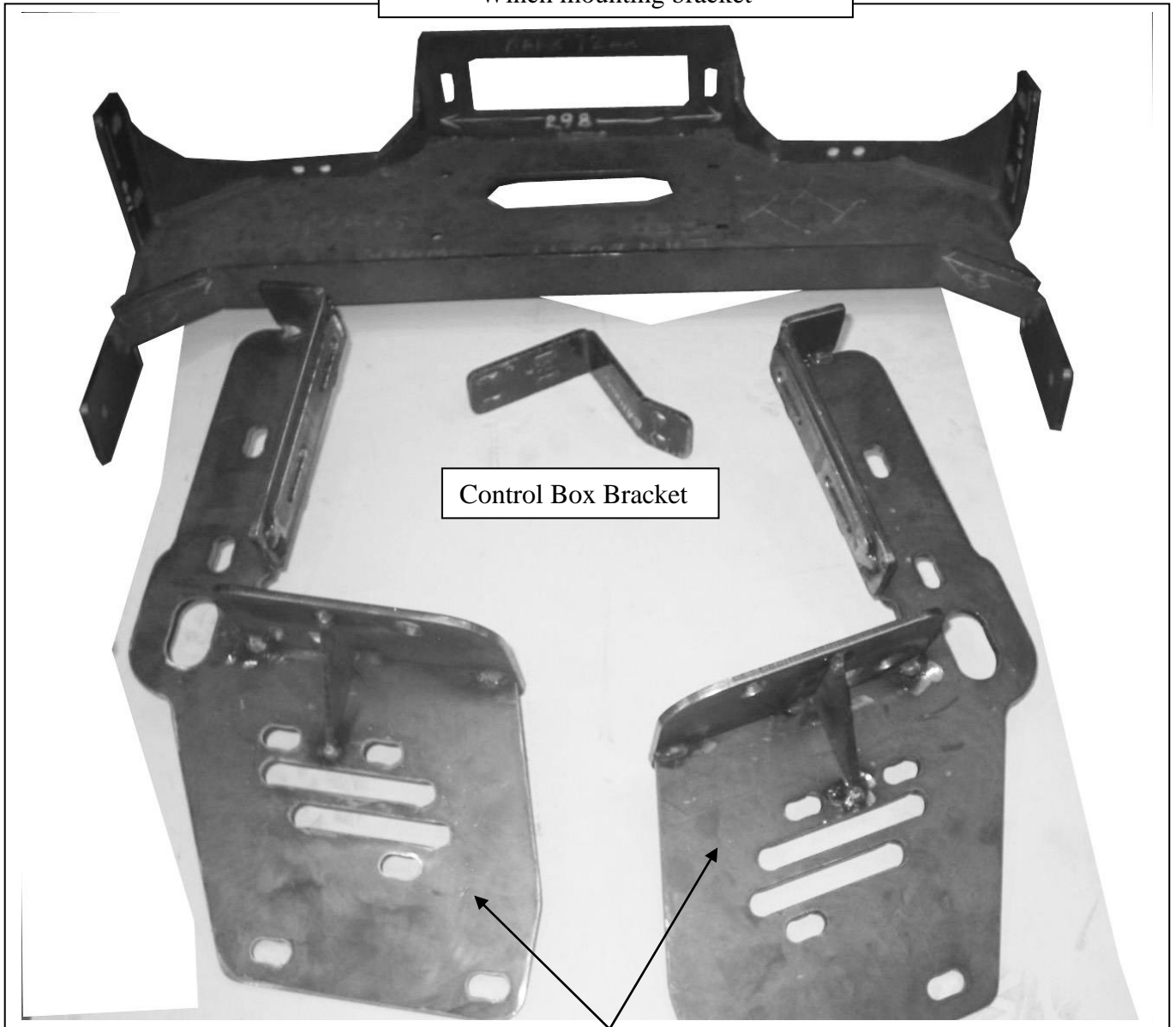
ecb@ecb.com.au www.ecb.com.au

29 Snook St
Clontarf QLD 4019
Australia

Po Box 122
Margate QLD 4019
Australia

WORLD'S BEST
ALLOY BULLBARS

Winch mounting bracket



Control Box Bracket

Pair of Steel Mounting Brackets